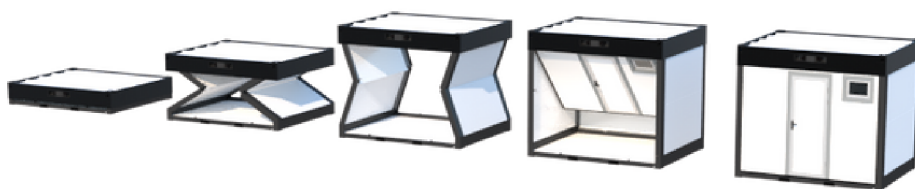


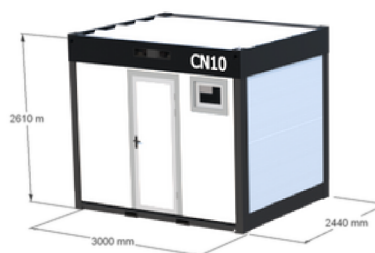


MODULAR SOLUTIONS LTD  
INDUSTRIAL / EVENTS / ICE RINKS

## INSTALLATION STEPS



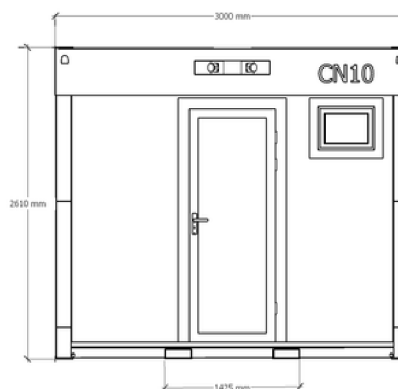
## UNFOLDED DIMENSIONS



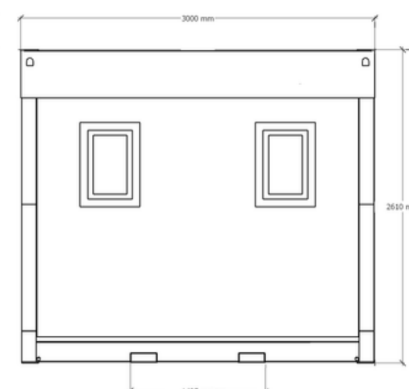
## FOLDED DIMENSIONS



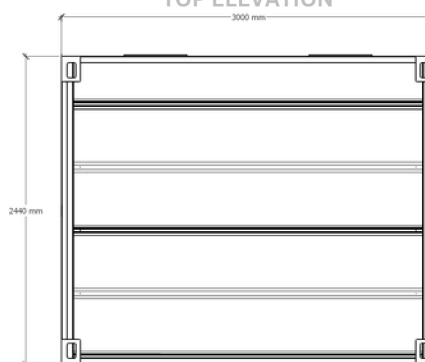
## FRONT ELEVATION



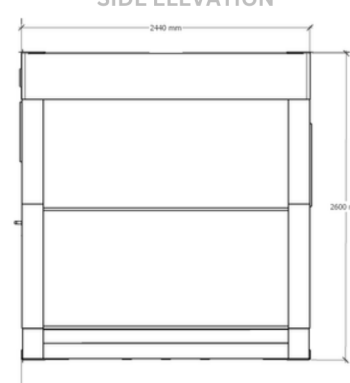
## REAR ELEVATION



## TOP ELEVATION



## SIDE ELEVATION



Item	Technology Data
Cabin Series	CN10
Length	External: 3000mm / Internal: 2870mm
Width	External: 2440mm / Internal: 2260mm
Height	External: 2610mm / Internal: 2420mm
Folded Height	500mm
Framework	Hot Dipped Galvanised Steel ISO Fixed Frame Framework Colour: Dark Grey
Two Side Walls	Insulated Sandwich Panel
Front & Back Walls	Insulated Sandwich Panel
Top Roof	Corrugated Steel Sheet
Sidewall Colour	Grey / Silver
Bottom Floor	Treated Plywood
Door	Single Personnel Door 1100mm x 2000mm
Window	3no. Aluminium Framed Glass Windows
Total Weight	900kg
Loading Quantities	40ft Trailer: 20 Units 20ft Trailer: 10 Units

1. 20 units can be loaded onto standard 40ft trailer
2. Set - up and tear in 5-10 minuts with 2no. Personnel
3. High adaptable - Multiple units can be connected
4. Decreases vehicles required (Cut Co2 Emissions)